

***Innovative Products that Deliver***

***Continuous Improvement***

***Cost Savings Solutions***

***Sustainability***

## **Custom Metal Tags**

Custom metal tags are used in nearly every industry and application imaginable. Anodized aluminum tags are customizable with any image, design, or information. This is often used for asset tag marking.

The high durability of using metal labels means your ID solution will hold up in harsh environments needed for heavy-duty applications. Applications with exposure to the elements such as valve tags are perfectly suited for durable metal materials.

Our metal tags are made with a variety of materials and processes to best fit the application.

### **Materials**

- > Aluminum Tags
- > Stainless Steel Tags
- > Cold Rolled Steel Tags
- > Brass Tags



[visualworkplaceinc.com](http://visualworkplaceinc.com) / (877) 523-4088

Contact Sales for a **PRODUCT DEMO, SAMPLES OR QUOTE**

[info@visualworkplaceinc.com](mailto:info@visualworkplaceinc.com)

Rev\_030421

## Custom Metal Tags

One of the most important factors when it comes to identification or inspection tags is durability.

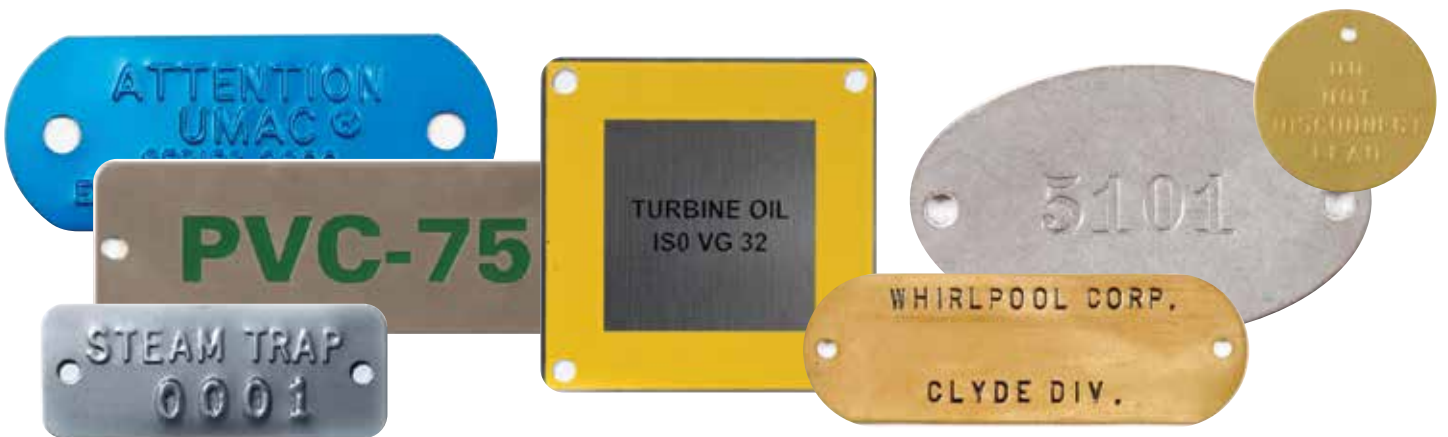
Our metal tags are made with a variety of materials and processes to best fit the application.

### Applications

- > Identification Tags
- > Inspection Tags
- > Safety Tags



## Varieties



- > Anodized Aluminum Tags
- > Metal Asset Tags
- > Blank Metal Tags
- > Embossed Variable Data Tags
- > Equipment Tags
- > Identification Tags
- > Metal Embossed Tags
- > Serialized Metal Tags
- > Stainless Steel Tags
- > Stamped Metal Tags
- > Telephone Pole Tags
- > Valve Tags

Make sure you know what type of environment the plate will be used in – this is a major factor in your product labeling selection.

Engraving and etching provide highly-customizable identification tag options. Engraving leaves deep cuts in the material for visibility, while laser-etched metal labels can provide a solid color fill.



**MetalPhoto**

MetalPhoto labels are a great solution for identification needs. Will the tag need to stand up to decades of potential abrasion and corrosion? MetalPhoto is the only option. Additionally, the ability to imprint high-resolution graphics directly onto the tag makes it an extremely versatile option.

### Let us help you with your project today!

Our goal is to make your experience extraordinary. Our mission is to provide you with the highest quality products, services and expertise that will keep you coming back!

**Visualize. Improve. Sustain.**

[visualworkplaceinc.com](http://visualworkplaceinc.com) / (877) 523-4088